

*15<sup>th</sup> Hungarian Geographical Contest 2023/24*

*2<sup>nd</sup> Round*

**Written Test**

**Source Booklet**

**12 January 2024**

**Do NOT open the booklet until told to do so by a supervisor!**

**Your answer will NOT be marked if you write it in this booklet!**



A. "At dawn in silence moves the mighty stream..." (Henry Van Dyke)

A.1.

1.

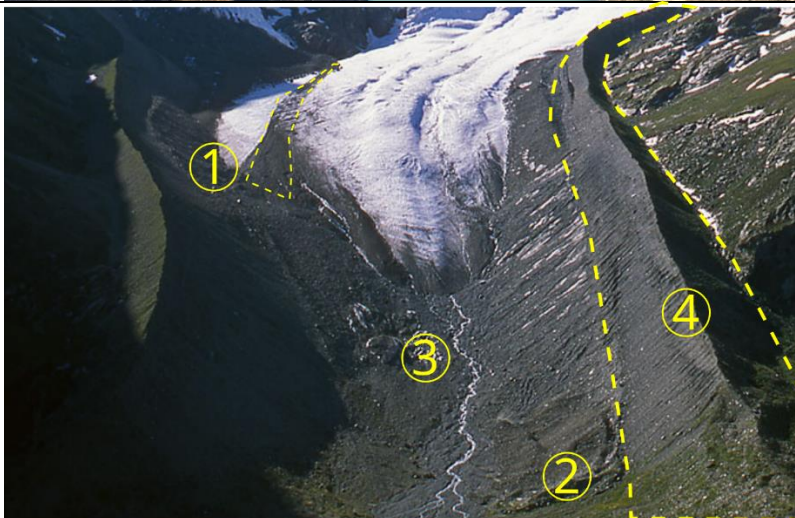


2.

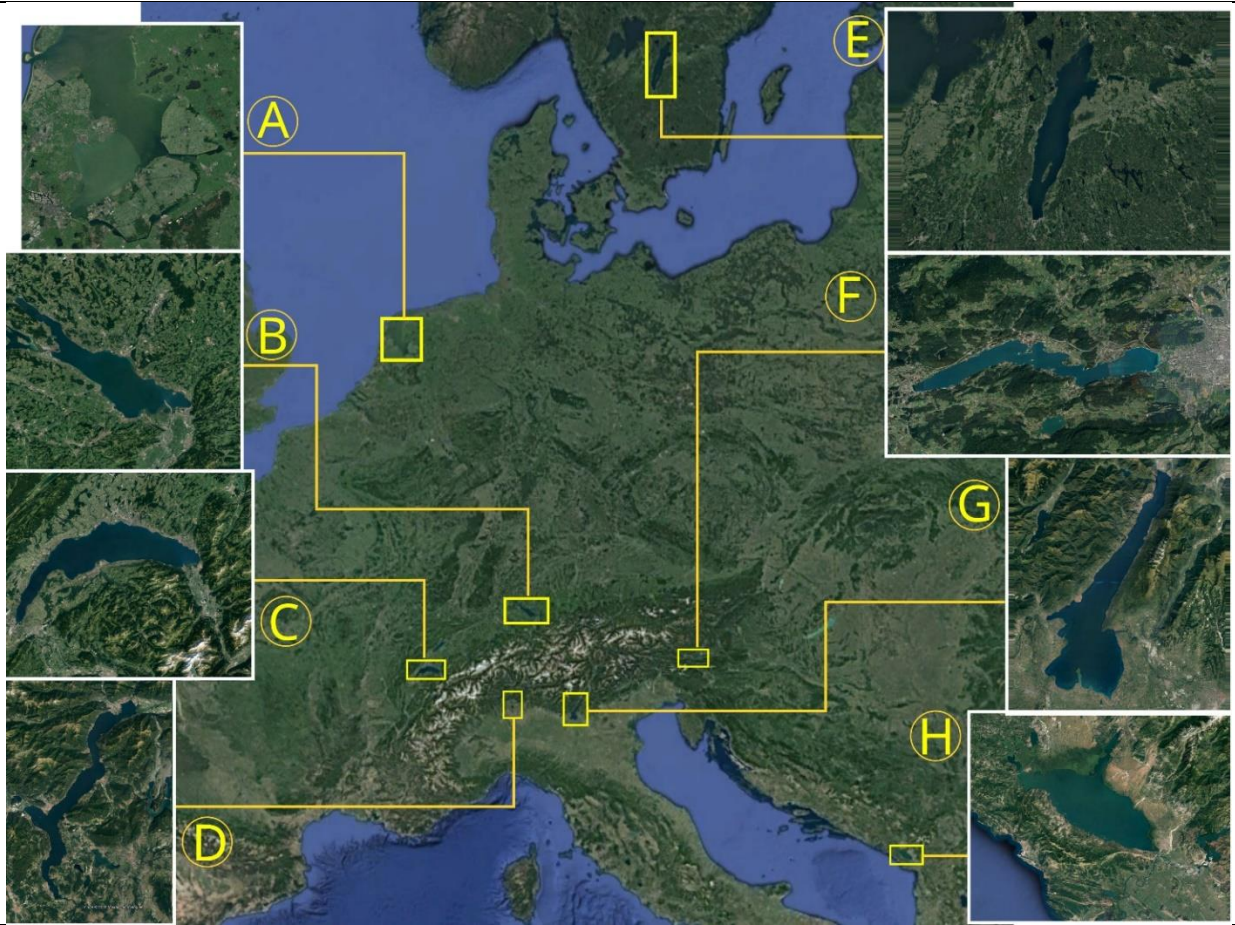


A.2.

1.



A.2.3



A.2.6.

*The Glacier*

At dawn in silence moves the mighty stream,  
The silver-crested waves no murmur make;  
But far away the avalanches wake  
The rumbling echoes, dull as in a dream;  
Their momentary thunders, dying, seem  
To fall into the stillness, flake by flake,  
And leave the hollow air with naught to break  
The frozen spell of solitude supreme.

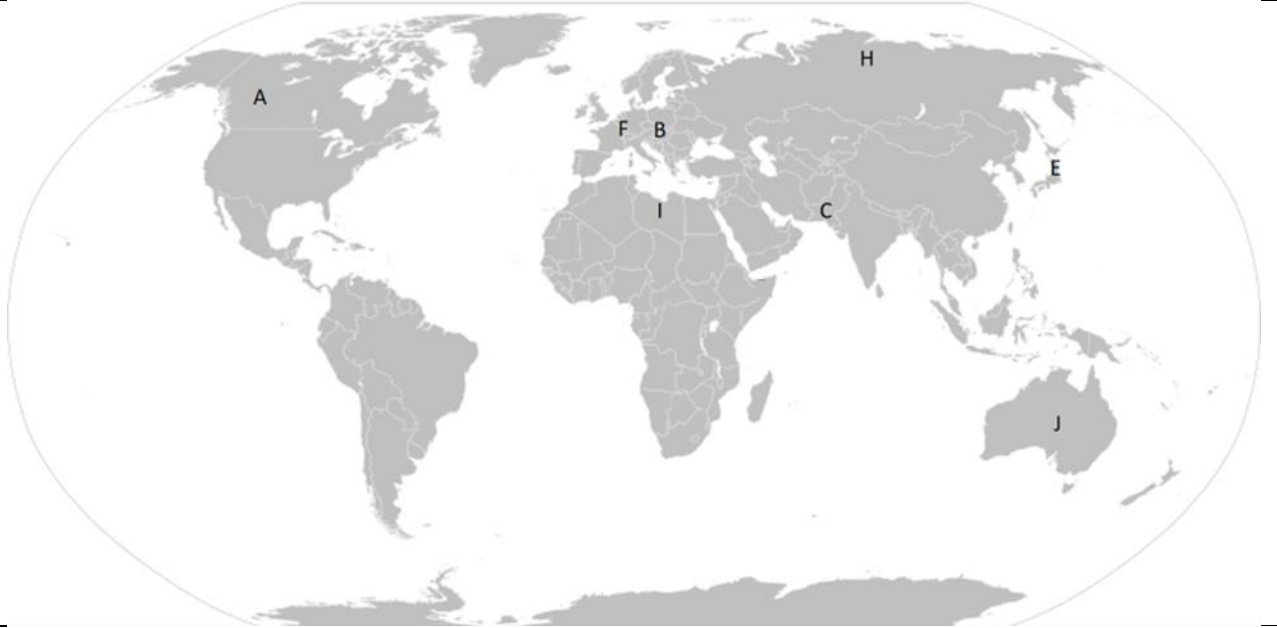
At noon unnumbered rills begin to spring  
Beneath the burning sun, and all the walls  
Of all the ocean-blue crevasses ring  
With liquid lyrics of their waterfalls;  
As if a poet's heart had felt the glow  
Of sovereign love, and song began to flow.

(Henry Van Dyke)

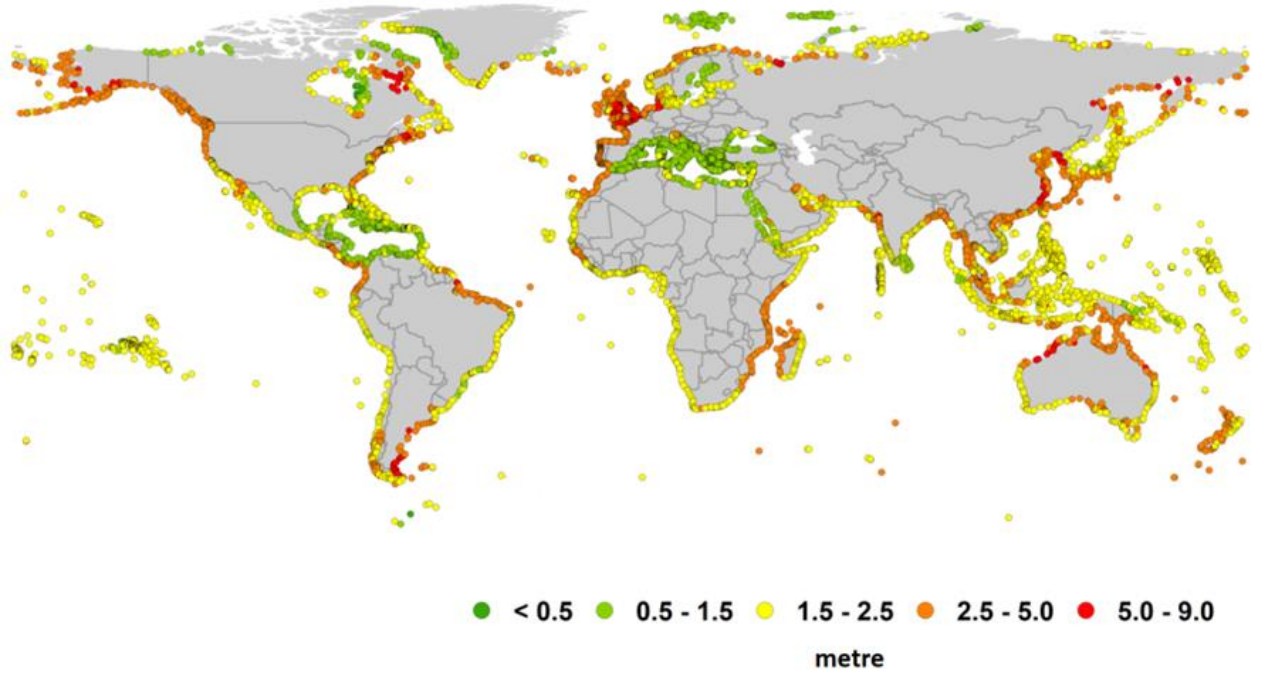


B. "Since global warming, Eskimos now have twenty different words for water." (John O'Farrell)

B.1.

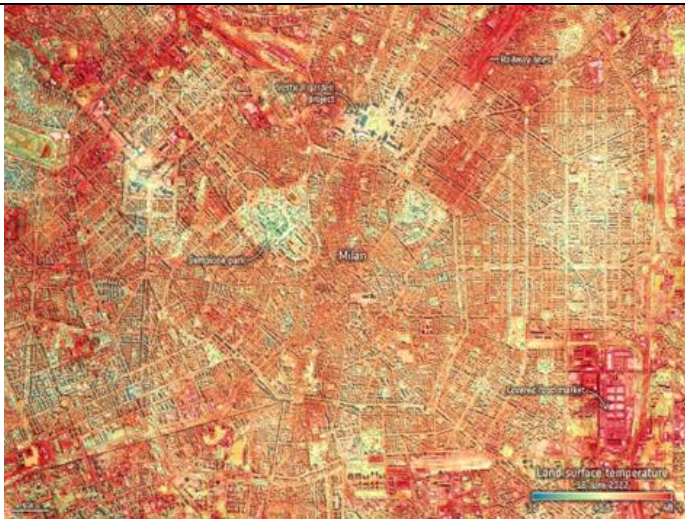
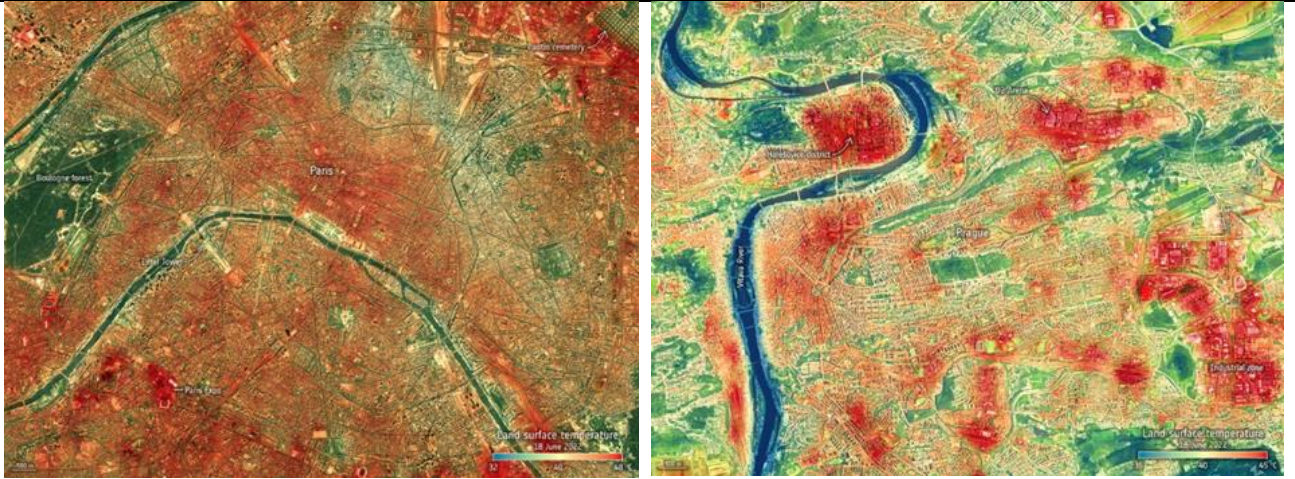


B.2.

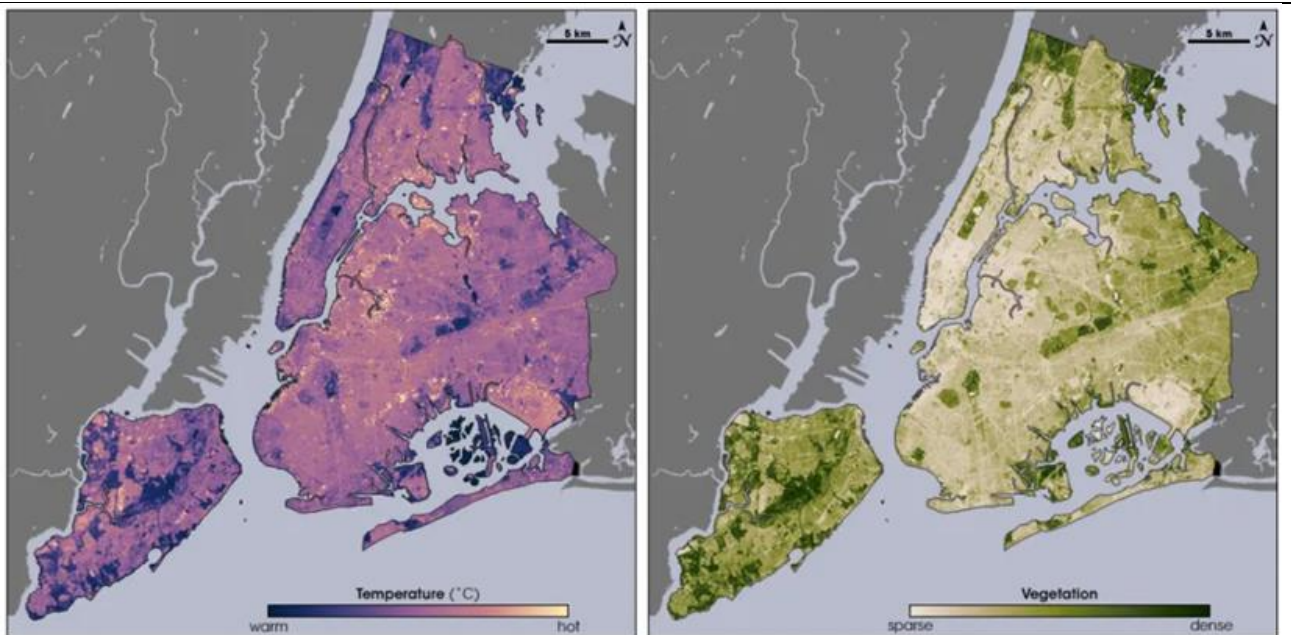


**C. Hot town, summer in the city/Back of my neck gettin' dirty and gritty" (Joe Cocker)**

**C.1.**

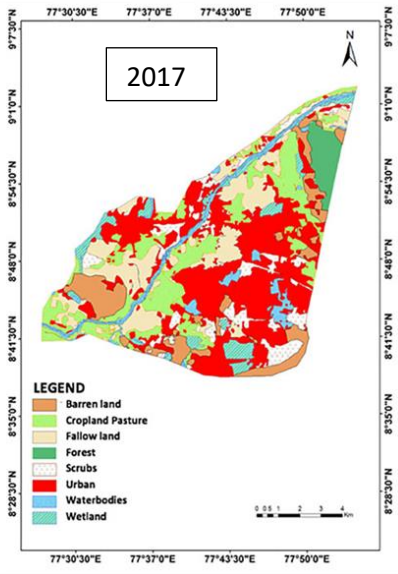
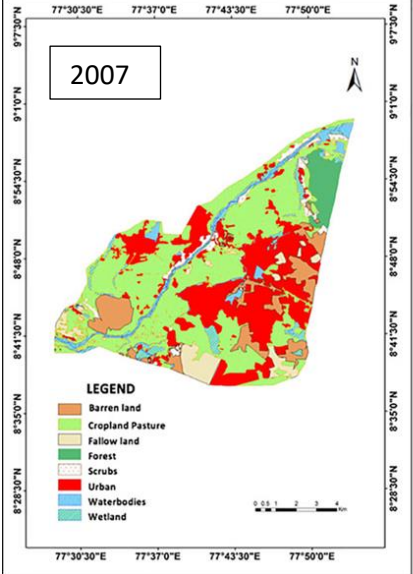
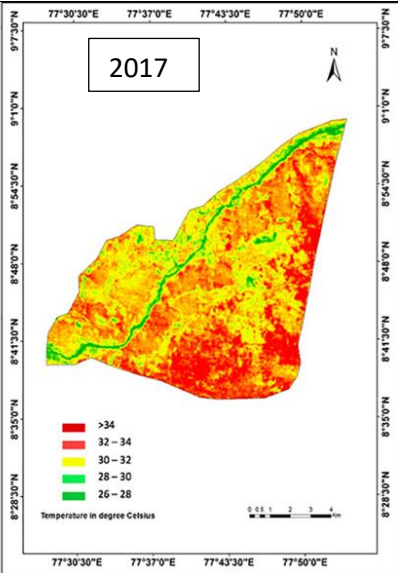
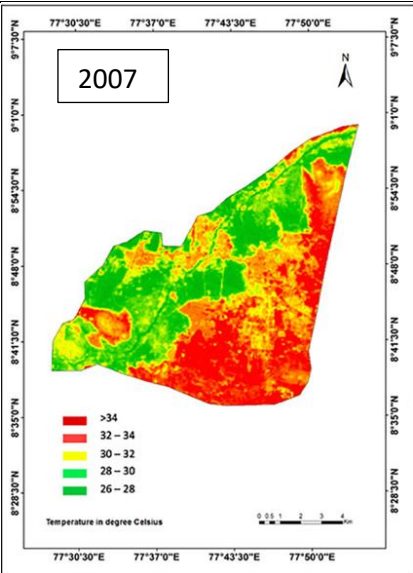


**C.2.1**



Temperature (left) and vegetation (right) for locations in and around New York City (USA) via satellite. (Credit: NASA)





*Land Surface Temperature maps (top row) and classified land use and land cover maps (bottom row) of Tirunelveli city (India) for (left) 2007 and (right) 2017. (Credit: Padmanaban R, Bhowmik AK, Cabral P (2019) Satellite image fusion to detect changing surface permeability and emerging urban heat islands in a fast-growing city.*

**C.3.**



*Namba Parks, a retail and office complex in Osaka, Japan, has an eight-level rooftop garden*



*The landscaped green roof at Beijing airport.*



*At six acres, the green roof that covers the West Building of the Vancouver Convention Centre is the largest in Canada.*

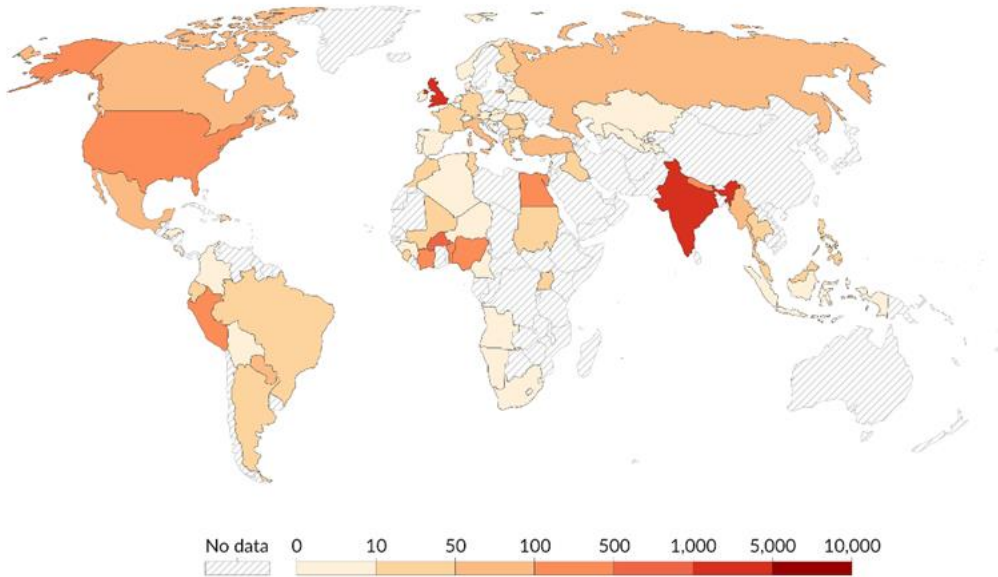
## D. "Human trafficking is an open wound ..." – Pope Francis

D.1.1.

### Human trafficking victims, 2021

The total number of human trafficking victims officially detected by national authorities.

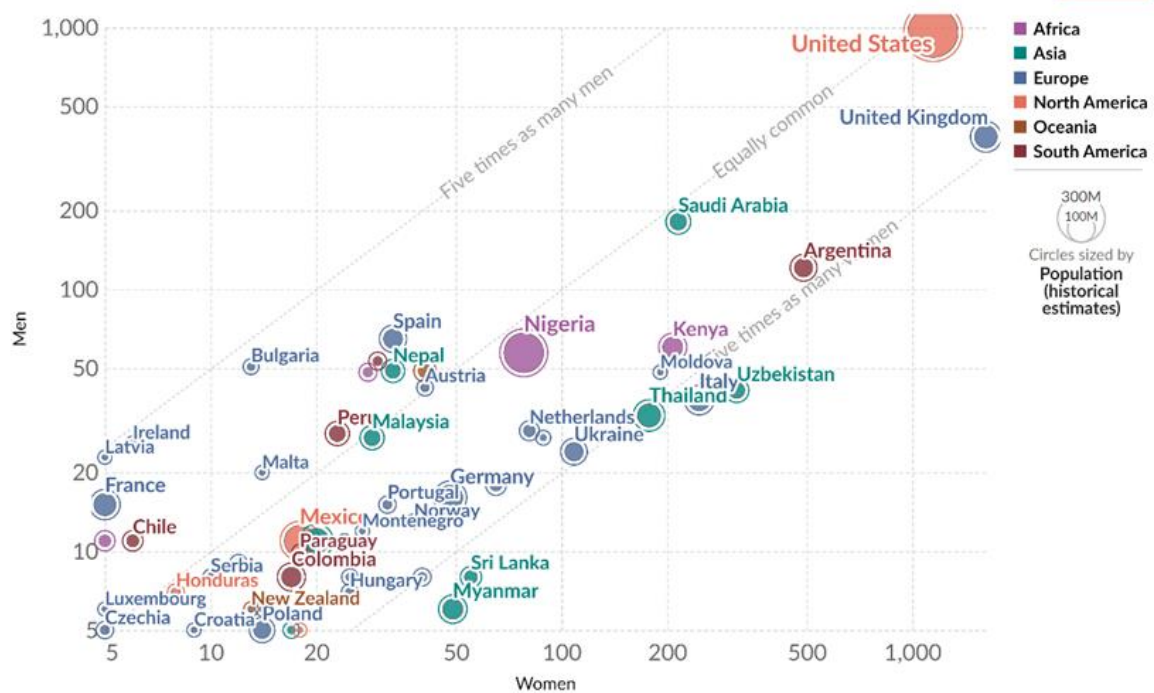
Our World in Data



D.1.3

### Human trafficking victims over 18 years old, male vs. female, 2020

Our World in Data



D.2.

Regions	Trends in the number of detected victims per 100,000 population, comparison from 2019 to 2020 by sex		Percentage change in the number of detected victims of sexual exploitation from 2019 to 2020	Conviction trends by region, comparison from 2019 to 2020	Prosecution trends by region, comparison from 2019 to 2020
	Male victims detected	Female victims detected			
North America	26%	14%	16%	-35%	-2%
Central and Southeastern Europe	38%	0%	3%	14%	12%
Western & Southern Europe	22%	4%	-40%	-45%	6%
Eastern Europe & Central Asia	41%	-24%	-29%	-21%	-33%
South Asia	3%	-12%	-31%	-56%	1%



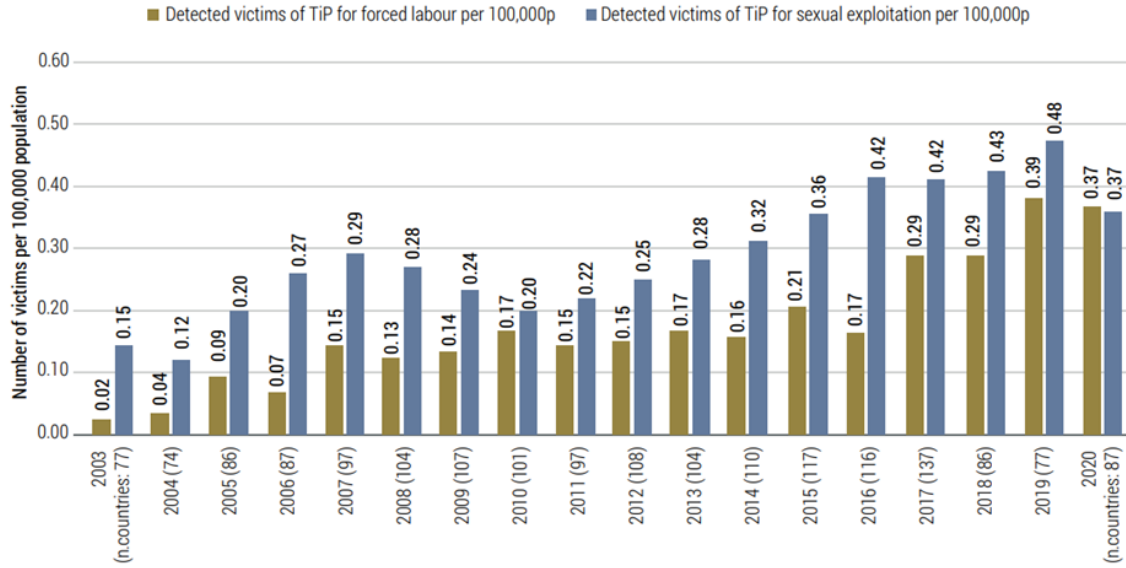
Sub-Saharan Africa	-24%	-8%	5%	22%	-6%
North Africa & Middle East	0%	-26%	-64%	-18%	16%
South America	-23%	-38%	-49%	-46%	20%
East Asia and the Pacific	-52%	-44%	-57%	-23%	-27%
Central America & Caribbean	-60%	-67%	-51%	-54%	-9%

D.3.	<p style="text-align: center;"><b>REGION-BY-REGION KEY DEVELOPMENTS</b></p> <p><b>CENTRAL AMERICA AND THE CARIBBEAN</b></p> <ul style="list-style-type: none"> <li>› 60% decrease in male victims detected; 67% decrease in female victims detected.</li> <li>› A large number of girls are trafficked for sexual exploitation.</li> <li>› More than 10% of detected victims of sexual exploitation are males.</li> </ul> <p><b>CENTRAL AND SOUTH-EASTERN EUROPE</b></p> <ul style="list-style-type: none"> <li>› Continued increase in the detection of victims of trafficking in persons.</li> <li>› The region recorded an increase in convictions in 2020.</li> </ul> <p><b>EAST ASIA AND THE PACIFIC</b></p> <ul style="list-style-type: none"> <li>› 59% decrease in the number of victims of trafficking detected in 2020.</li> <li>› 81% decrease in the number of victims of cross-border trafficking detected in 2020.</li> <li>› Men and boys trafficked for sexual exploitation are more frequently reported than in other subregions.</li> <li>› East Asian trafficking outflows remain of a global dimension as most regions detect victims from this part of the world.</li> </ul> <p><b>EASTERN EUROPE AND CENTRAL ASIA</b></p> <ul style="list-style-type: none"> <li>› 41% increase in male victims detected; 24% decrease in female victims detected.</li> <li>› Limited impact of the pandemic on the detection of trafficking victims.</li> <li>› Severe slowdown of the criminal justice response to trafficking recorded in 2020.</li> </ul> <p><b>NORTH AMERICA</b></p> <ul style="list-style-type: none"> <li>› 26% increase in male victims detected; 14% increase in female victims detected.</li> <li>› 35% drop in the number of convictions during 2020.</li> </ul> <p><b>SOUTH AMERICA</b></p> <ul style="list-style-type: none"> <li>› 23% decrease in male victims detected; 38% decrease in female victims detected.</li> <li>› The number of people convicted in the region was 46% lower than that seen in 2019.</li> </ul> <p><b>SOUTH ASIA</b></p> <ul style="list-style-type: none"> <li>› 31% decrease in detected victims trafficked for sexual exploitation.</li> <li>› In 2020, more men were detected as victims of trafficking compared to previous years.</li> <li>› 23% decline in the number of domestic victims detected in 2020.</li> <li>› Fewer victims per 100,000 population are detected than other parts of the world.</li> </ul> <p><b>SUB-SAHARAN AFRICA</b></p> <ul style="list-style-type: none"> <li>› The number of foreign victims detected in Sub-Saharan Africa countries fell, especially in comparison to 2018 levels.</li> <li>› Children continue to account for the majority of detected trafficking victims. Between 2019 and 2020, the rate of child victims per 100,000 population increased by 43%.</li> <li>› Fewer victims per 100,000 population are detected than other parts of the world.</li> <li>› Compared to other regions of origins of cross-border trafficking, victims from Sub-Saharan Africa are detected in a growing number of countries, both within and outside the region of origin.</li> </ul> <p><b>THE MIDDLE EAST AND NORTH AFRICA</b></p> <ul style="list-style-type: none"> <li>› 70% decrease in the number of victims of cross-border trafficking detected in 2020 compared to 2019.</li> <li>› 68% decrease in the detected child victims of trafficking in 2020 compared to 2019.</li> <li>› Children were reported to have been trafficked for exploitative begging.</li> </ul> <p><b>WESTERN AND SOUTHERN EUROPE</b></p> <ul style="list-style-type: none"> <li>› In 2020, 22% increase in male victims detected compared to 2019.</li> <li>› A proportion of detected victims are trafficked to be exploited in criminal activity or mixed forms of trafficking.</li> <li>› Increased detection of domestic trafficking.</li> <li>› Decrease in prosecutions and convictions.</li> </ul>
------	--



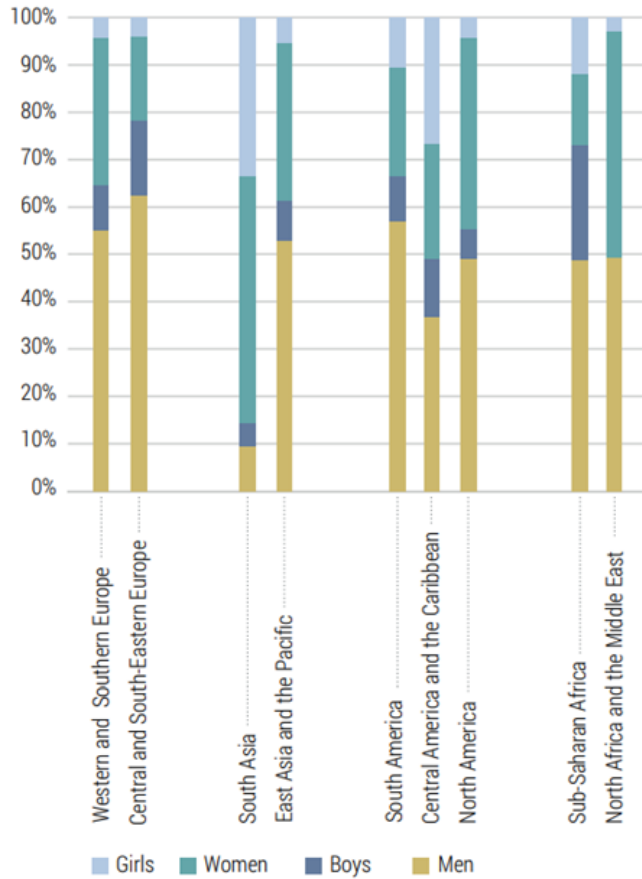
D.4.

**Fig. 5** Trend: Detected victims trafficked for forced labour vs. sexual exploitation, per 100,000 population, 2003-2020



Source: UNODC elaboration of national data and UNDESA World Population Prospects 2019.

**Fig. 13** Detected victims of trafficking for forced labour, by age group, sex and region, 2020 (or most recent)



Source: UNODC elaboration of national data.

**E. "Suburbia is where the developer bulldozes out the trees, then names the streets after them." (William E. Vaughan)**

E.1. 1.

**Town-builder LEVITT previews the new 9½-foot wonder kitchen by General Electric**

This is town-builder Bill Levitt, and area map of Levittown, Pa. When completed, this new community (between Philadelphia and Treasens) will house 70,000; contain 17,000 dwellings... with schools, churches, shopping centers and playgrounds—all pre-planned.

\$100 a month covers all taxes, interest, insurance and maintenance for this beautiful new "Gentry Club" Levittown house. Complete price: \$17,500. Veterans pay \$1000 down; non-veterans \$2000. Included at no extra cost: new 9½-foot wonder kitchen by G.E., below.

2.

**THE 1950 House of Levittown**  
TELEVISION EQUIPPED by ADMIRAL  
**Complete Price - \$7990**

REAR VIEW OF ALL HOUSES

*It's a promise!*

JIM'S going away tomorrow... and there will be long, lonely days before he comes back. But that little home sketched there in the sand is a symbol of faith and hope and courage. It's a promise, too. A promise of gloriously happy days to come... when Victory is won.

Victory Homes of tomorrow will make up in part at least for all the sacrifices of today... and that's our promise! They will have better living built in... electrical living with new standards, new conveniences, new economies to make every day an adventure in happiness.

Plan for your Victory Home now... the surest way is to buy War Bonds. Every Bond you buy is an investment in your future happiness and security... every dollar you put into Bonds helps bring our boys back sooner—and safer. Buy another Bond today.

The General Electric Consumer Institute at Bridgeport, Conn., is pleased to furnish its service from problems such as: Nutrition - Food Preparation - Food Preservation - Appliances Care - Appliances Repair - Landscaping - Home Heating and Air Conditioning. Helped by modern appliances, new appliances are available from your G.E. Appliances Dealer or General Electric Consumer Institute, Dept. 1-5.

APPLIANCE AND MECHANICAL DEPARTMENT, BRIDGEPORT, CONN.

**GENERAL ELECTRIC**

3.

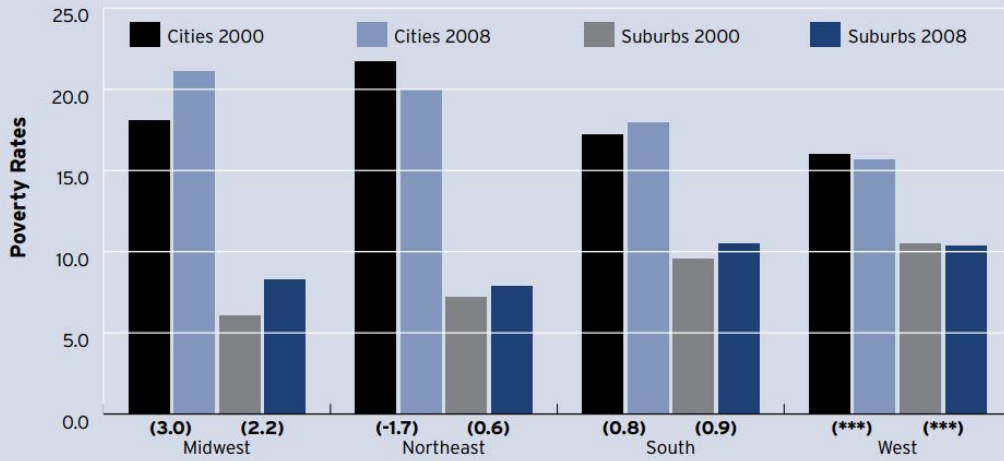
**This is the way you live at LEVITTOWN**

Look through these pages for the modern answer to your housing problem. See how beauty, utility and craftsmanship have been combined to give you the glamorous exterior and the unique, new four phase form which no other home you have always wanted.



E.3. 1.

**Figure 2. City and Suburban Poverty Rate by Region, 95 Metro Areas, 2000 and 2008**

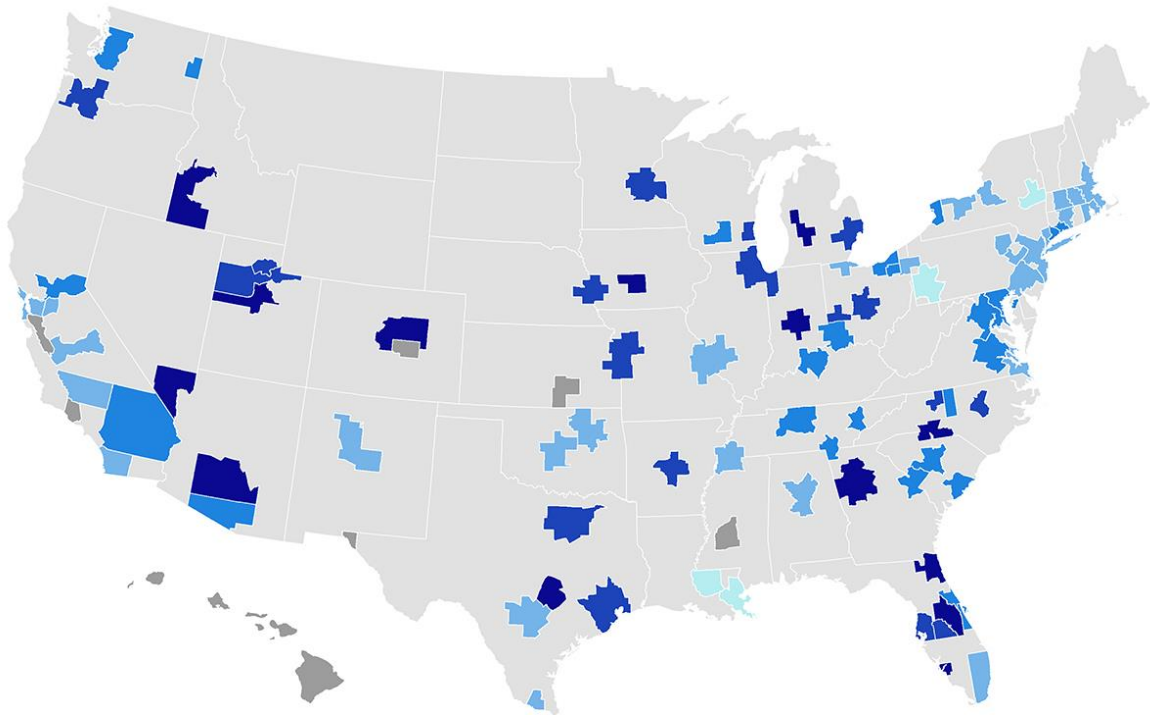


Figures in parentheses represent significant change at the 90 percent confidence level.

Source: Brookings Institution analysis of Census 2000 and ACS 2008 data

2.

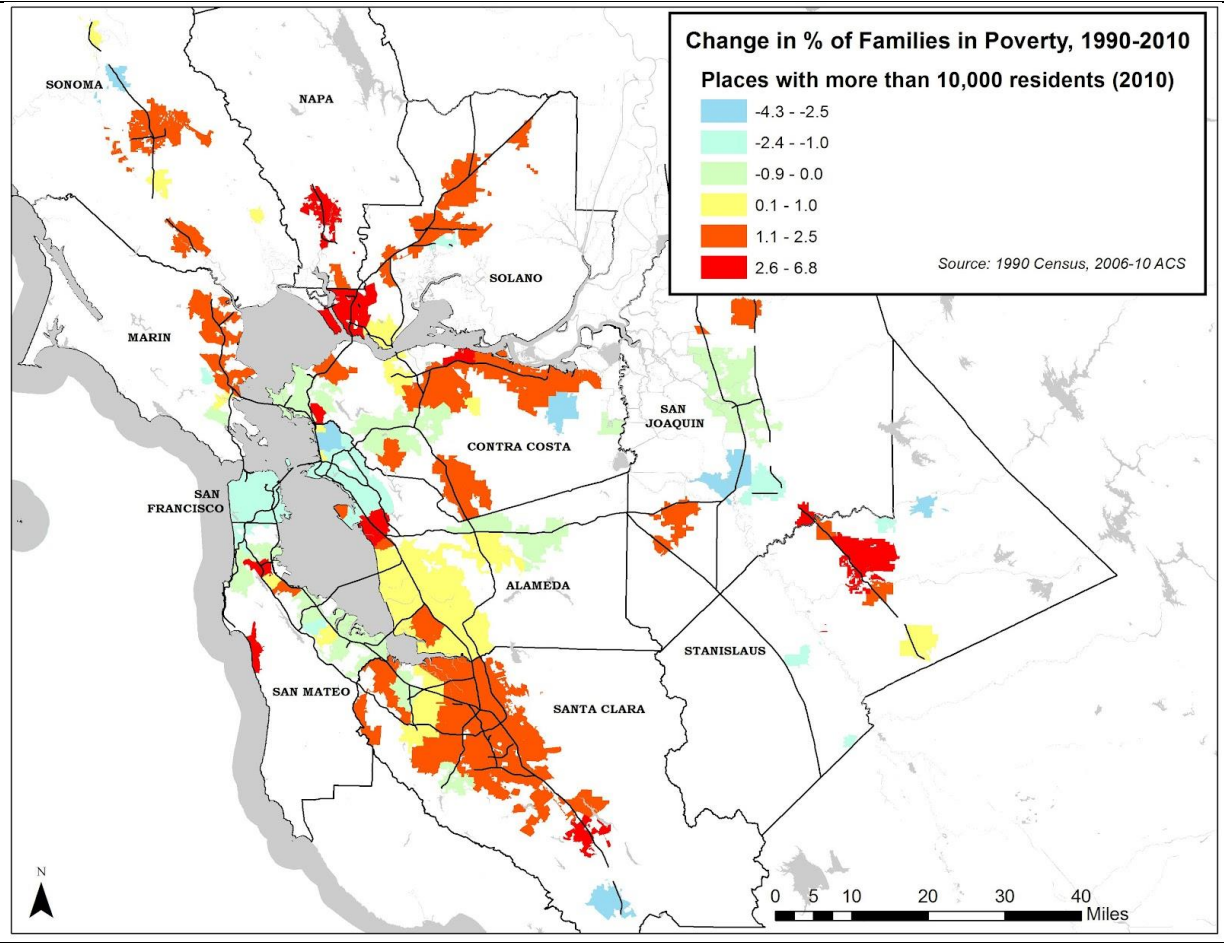
**PERCENTAGE CHANGE IN THE SUBURBAN POOR POPULATION IN THE NATION'S MAJOR METROS, 2000-2015**



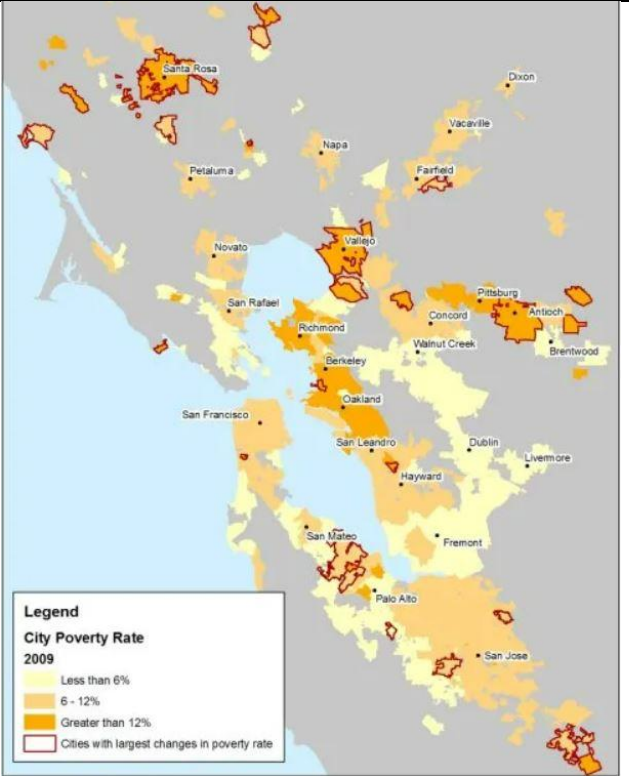
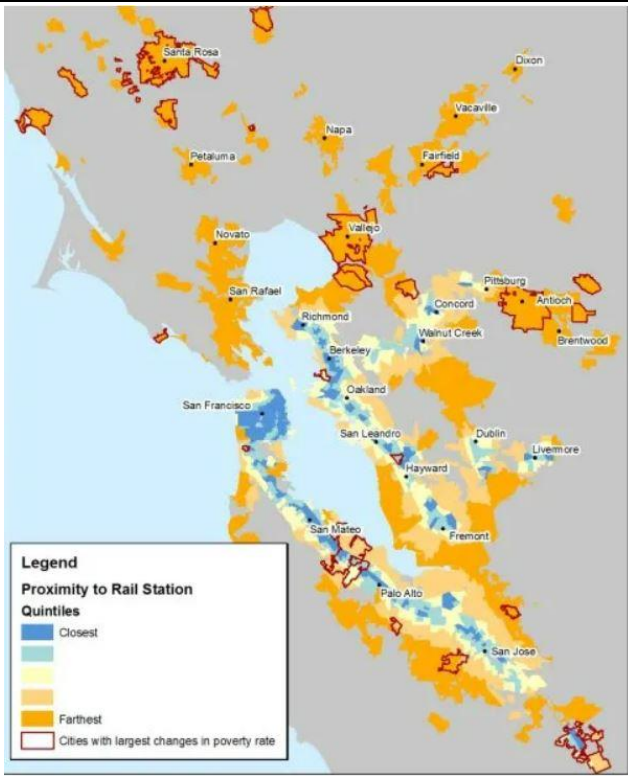
**PERCENTAGE CHANGE**  
 6.4 to 25    25.1 to 50    50.1 to 75    75.1 to 100    100.0 to 151.5    No statistically significant change

source: Author's analysis of U.S. Census Bureau Data

E.4. 1.

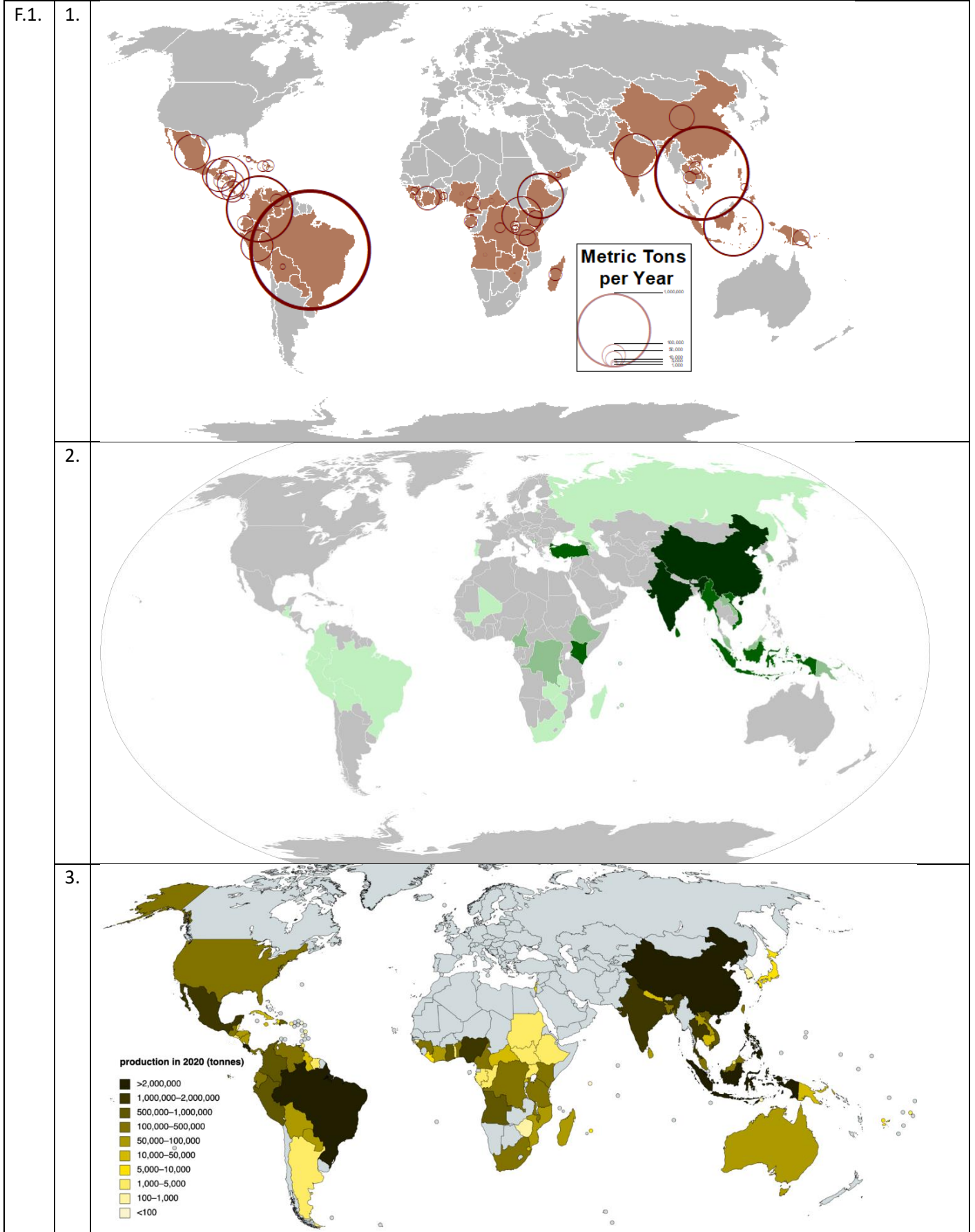


2.





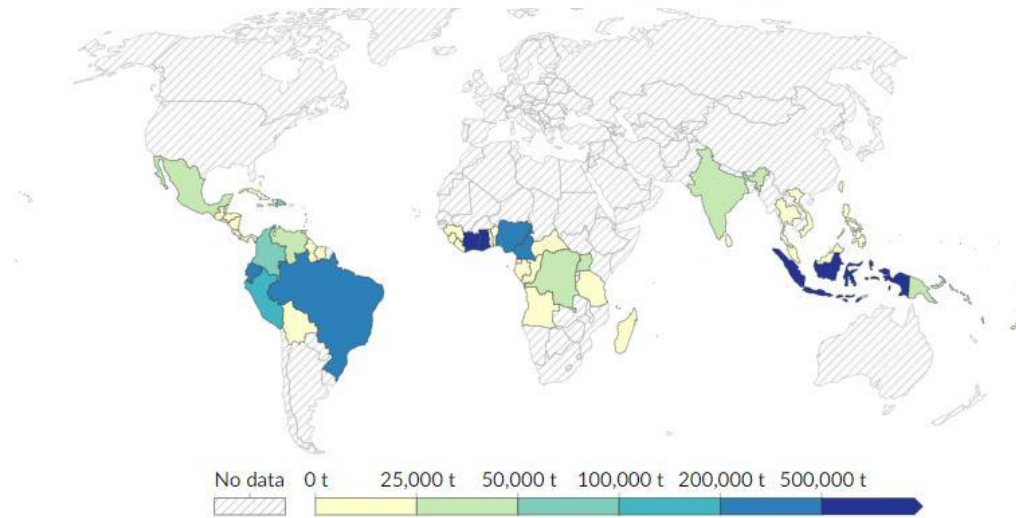
F. "A mathematician is a device for turning coffee into theorems." (Pál Erdős)



4.



5.

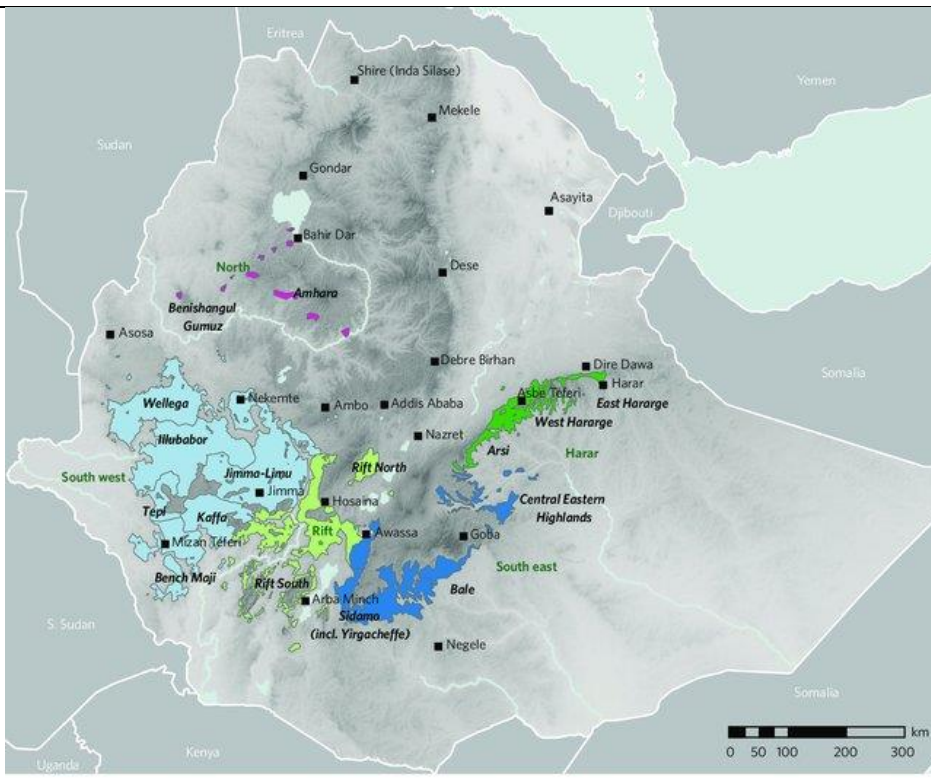


F.2. 1.

	Coffee export (gross, million USD)	Share of world export	Coffee production (metric tons)	Export value - Million USD	GDP (nominal) - Million USD
Brazil	5,800	16.6%	2,652,000	380,000	1,609,000
Switzerland	3,600	10.3%	-	620,000	813,000
Colombia	3,050	8.7%	810,000	72,000	314,000
Germany	2,770	7.9%	-	2,060,000	4,260,000
Vietnam	2,310	6.6%	1,650,000	340,000	366,000
Italy	2,070	5.9%	-	746,000	2,108,000
France	1,320	3.8%	-	1,005,000	2,958,000
Honduras	1,210	3.5%	580,000	9,000	28,000
Ethiopia	1,070	3.1%	384,000	9,000	99,000
Guatemala	960	2.7%	204,000	15,000	86,000



F.3. 1.



2.



3.

